

## Description of the property

Annex 5



### Building dimensions

Detached house built 1936 in 1 ½ plane with basement. It is a concrete structure with walls of lightweight concrete which is partly covered and insulated with a wood panel facade. Former used as a cow stable in combination with divided sections for different use. Some sections of the building have been renovated and rebuilt 1965 and 1985.

|                   |                    |
|-------------------|--------------------|
| Building area     | 333 m <sup>2</sup> |
| Office space      | 315 m <sup>2</sup> |
| Distributed on:   |                    |
| Workshop 1        | 70 m <sup>2</sup>  |
| Workshop 2        | 40 m <sup>2</sup>  |
| Conference hall   | 110 m <sup>2</sup> |
| Store rooms       | 53 m <sup>2</sup>  |
| Apartment         | 50 m <sup>2</sup>  |
| Convertible parts | 180 m <sup>2</sup> |
| Side area         | 73 m <sup>2</sup>  |

Metal roofed

### Floor 1

The side area basement contains the main laundry with an effective drying room. The laundry has three washing machines, mangle, spin dryer, ironing equipment and an effective exhaust system  
A boiler room (oil burner) used as a second source. It is connected to the estate heating system and is designed to supply all the houses which are connected to the main system.

### Floor 2

First entrance: workshop 1, wc/shower.  
Second entrance: hall, conference hall, wc.  
Third entrance: workshop 2, two store room and a back entrance.

## Description of the property

### Floor 3

Apartment with entrance hall, living room, wc, bed alcove, clothes closet.  
The rest of this floor contains a former storage for forage, not longer used.  
The storage can easily be rebuilt to another apartment or several single rooms.

### More over

The floor and the ceiling in the laundry are made of concrete and the walls are made of glazed tile. The ceiling in the other parts is made of concrete and the walls are plastered.

The floor covering on the first floor has plastic carpets, except for the conference hall, which has a wooden floor and the storage rooms which have painted concrete floors.  
The fresh water and the sewing system are connected to the estates system.

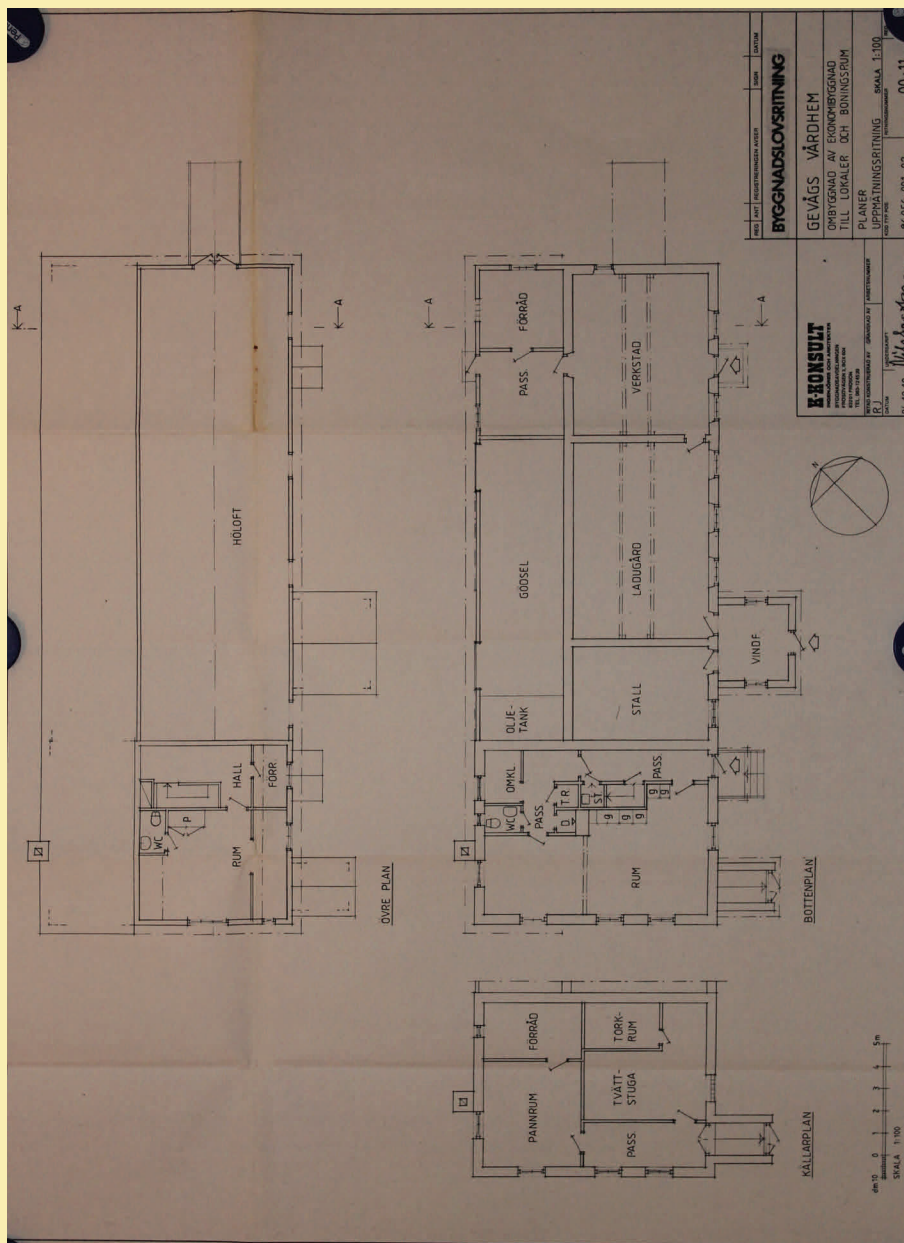
The floor covering in the apartment has plastic carpet and the walls surface has painted woven fiberglass and the ceiling is made of painted fiber board

### Judgement

The inside, as well as the outside of the building is considered well maintained

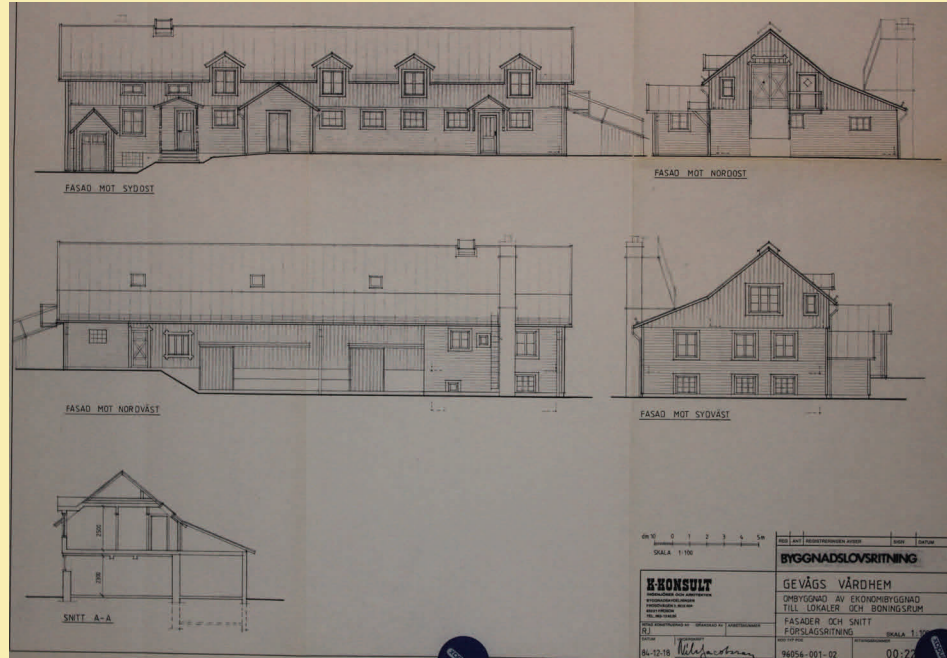
# Description of the property

## Plan drawing



## Description of the property

### Plan drawing Exterior



The drawing is a proposal for a planned rebuilding of the forage storage to 3 bed room and a larger pentry room. The four ceiling windows on the drawing does not exist today. Otherwise in appearance, will the drawing be in accordance with how the building looks today.

### Plan drawing of the laundry in the basement

